

Installing MedeA on Windows with the Windows Installer

Contents

- [Introduction](#)
- [Installation Process](#)

1 Introduction

With the Windows installer, you can choose to install just the graphical user interface (GUI), just the computing backend (JobServer and TaskServer), or a fully working configuration containing all three components: GUI, JobServer, and TaskServer (*MedeA* platform).

Note: This section is for a fresh and new installation of *MedeA* 3.6 on Windows using *MedeAInstaller3.6.0.exe*. For updating an existing *MedeA* version to 3.6, please see the Section Update Existing MedeA.

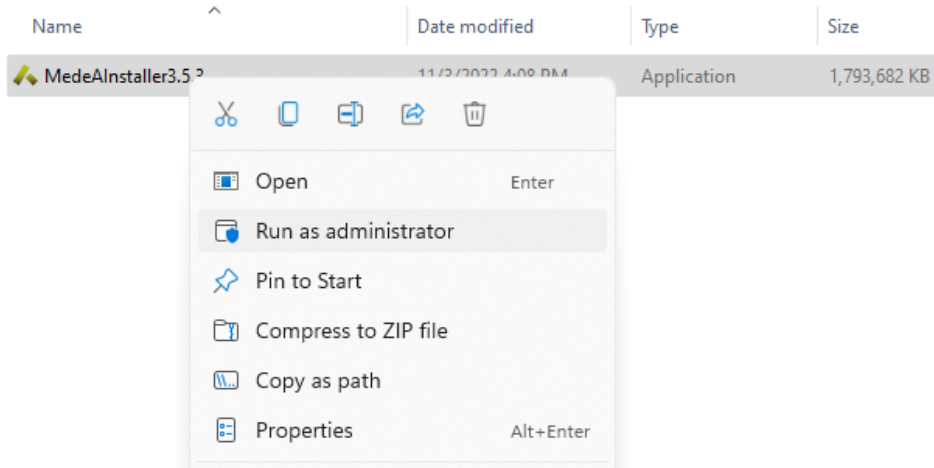
The Windows installer can be placed on a network drive to deploy *MedeA* on multiple machines. Additional databases and an existing license file in the same directory will be used and included in the installation path. One requirement is that the installation drive must be SQLite-compatible.

Note: The Windows Installer includes only the COD database. If you would like to install other licensed databases (ICSD, Pearson, NCD, and MSI Phase diagrams) at the same time, you can download these databases from <http://update.materialsdesign.com/db> using your Materials Design account and place them in the same directory as the Windows Installer. Alternatively, you can install *MedeA* from an ISO image which includes more database files. Please see Section Installation from ISO for details.

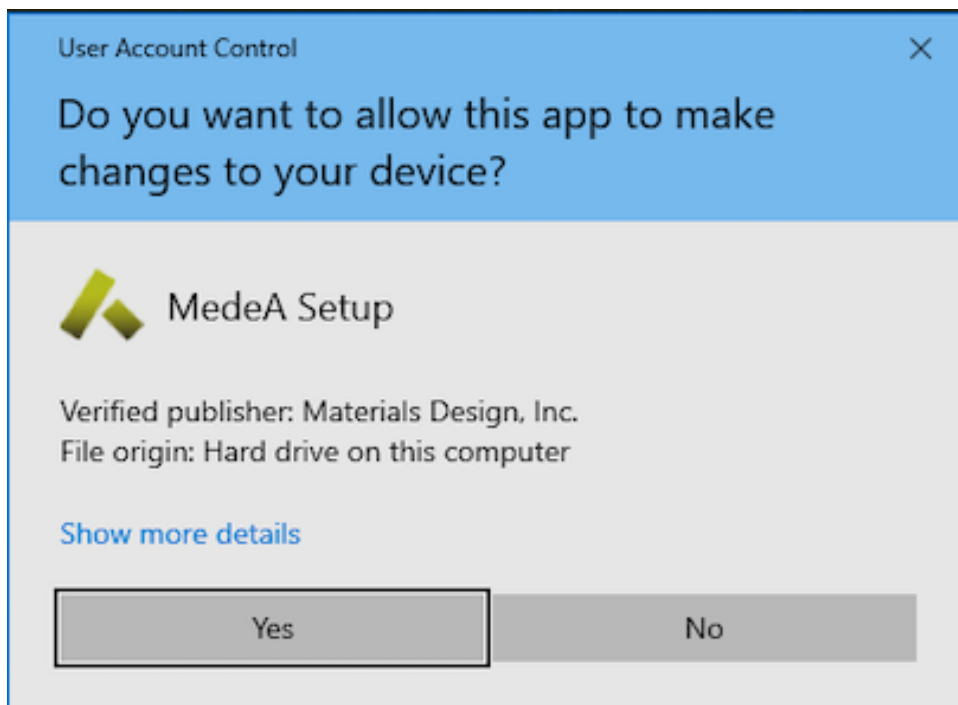
2 Installation Process

It is necessary to have administrative rights to keep the computing backend (JobServer and TaskServer) running as services. This allows you to log off the machine, but have calculations continue to progress. If you don't have administrative rights, you can still start the JobServer and TaskServer manually after installation.

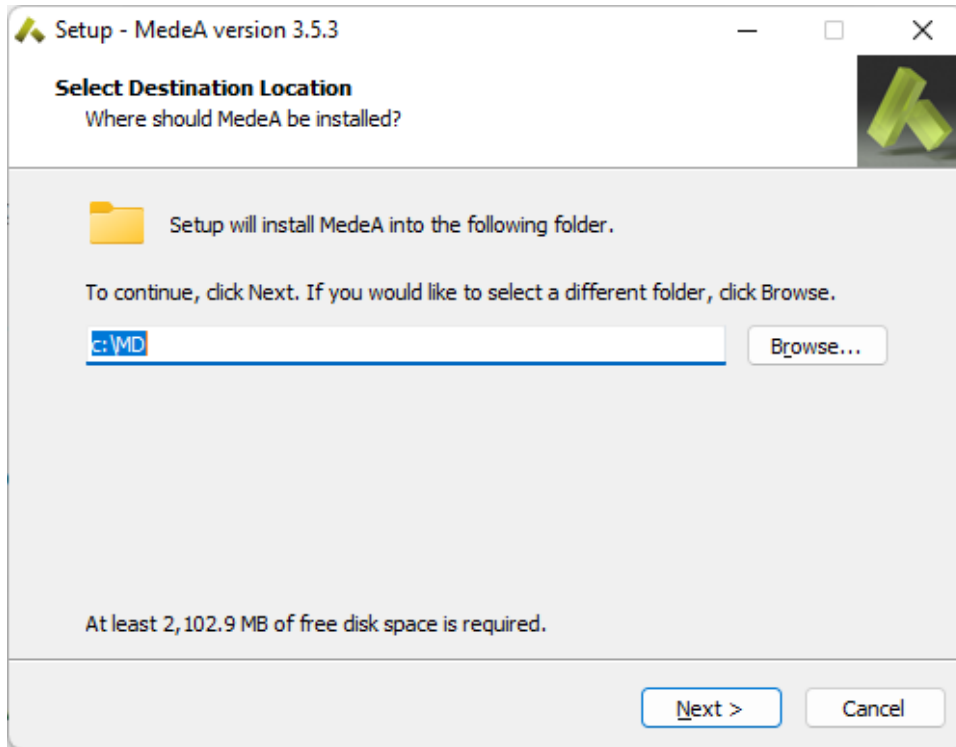
Right-click on the file *MedeAInstaller3.6.0.exe* and select **Run as administrator**



The installer is signed and verified to be from Materials Design, Inc.

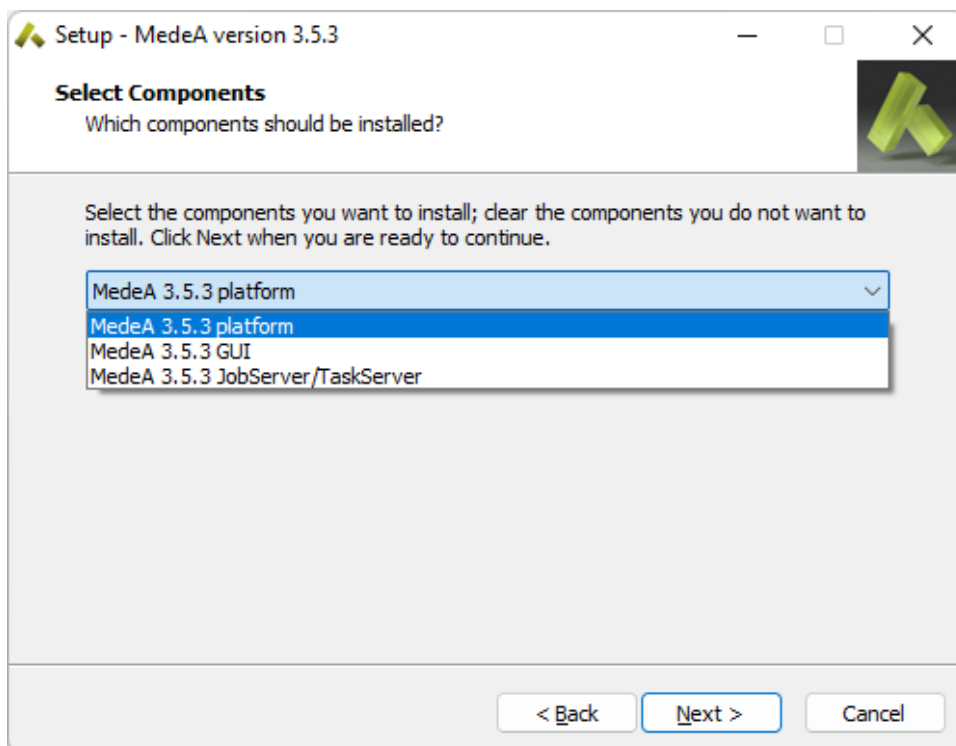


The next step is to select an installation directory:

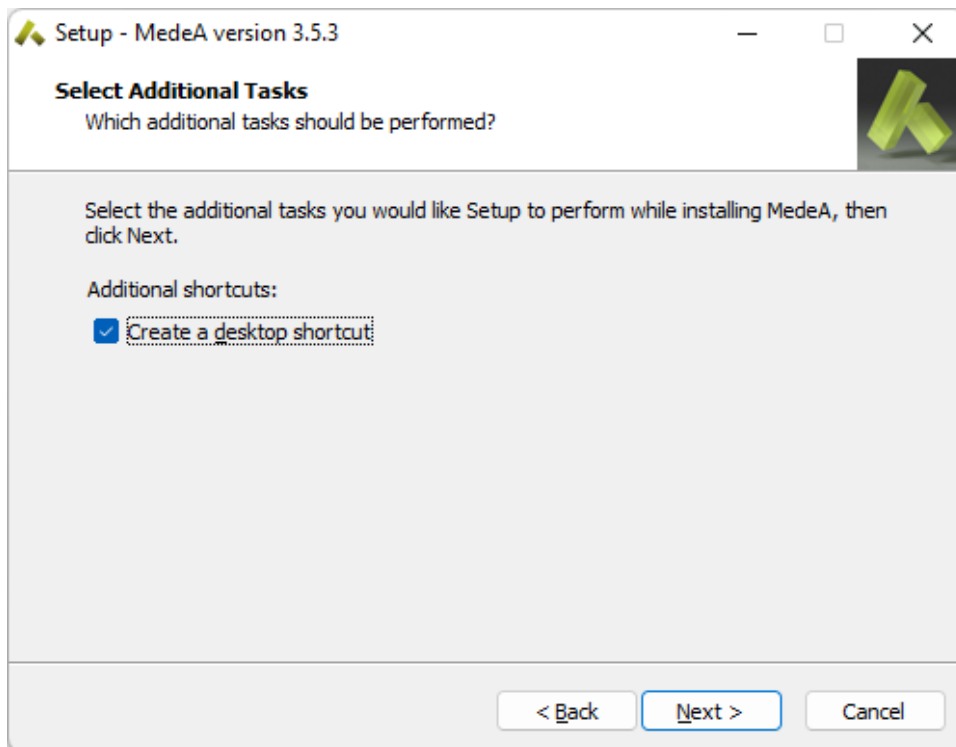
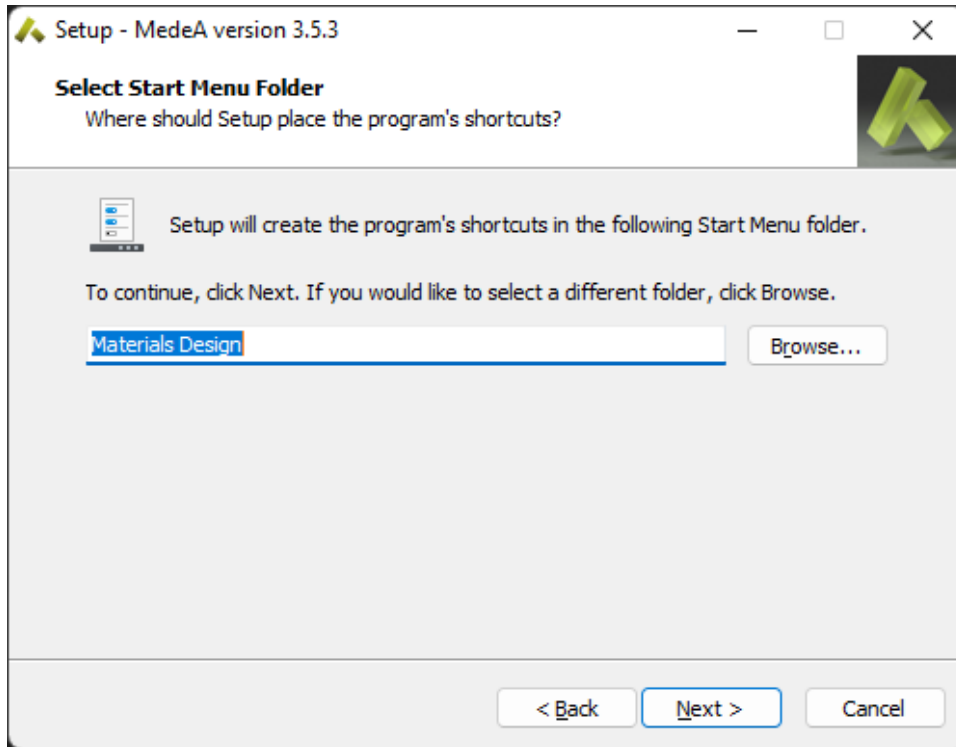


Hint: *MedeA 3.6* can be installed in directories containing spaces and special characters, e.g., C:\Program Files (x86)

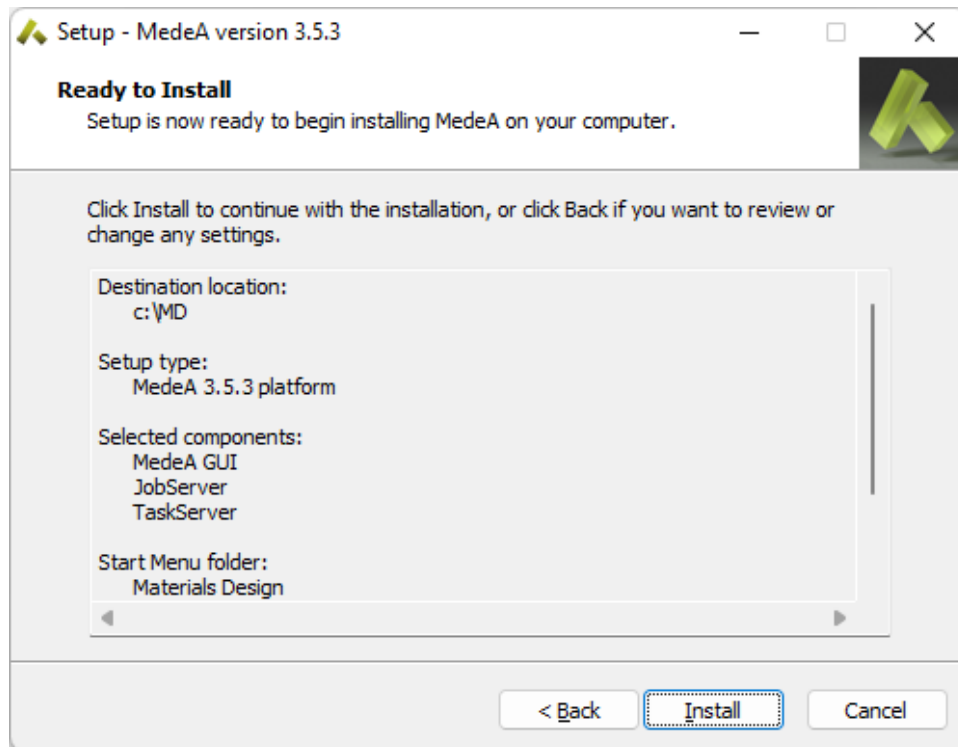
Then you can choose between the components to install: **MedeA 3.6.0 Platform** that includes all three components: GUI, JobServer, and TaskServer. Alternatively, you can only install the GUI via the **MedeA 3.6.0 GUI** option. The last option is to install only the JobServer / TaskServer to run in the background. Let's select **MedeA 3.6.0 Platform** and click **Next**.



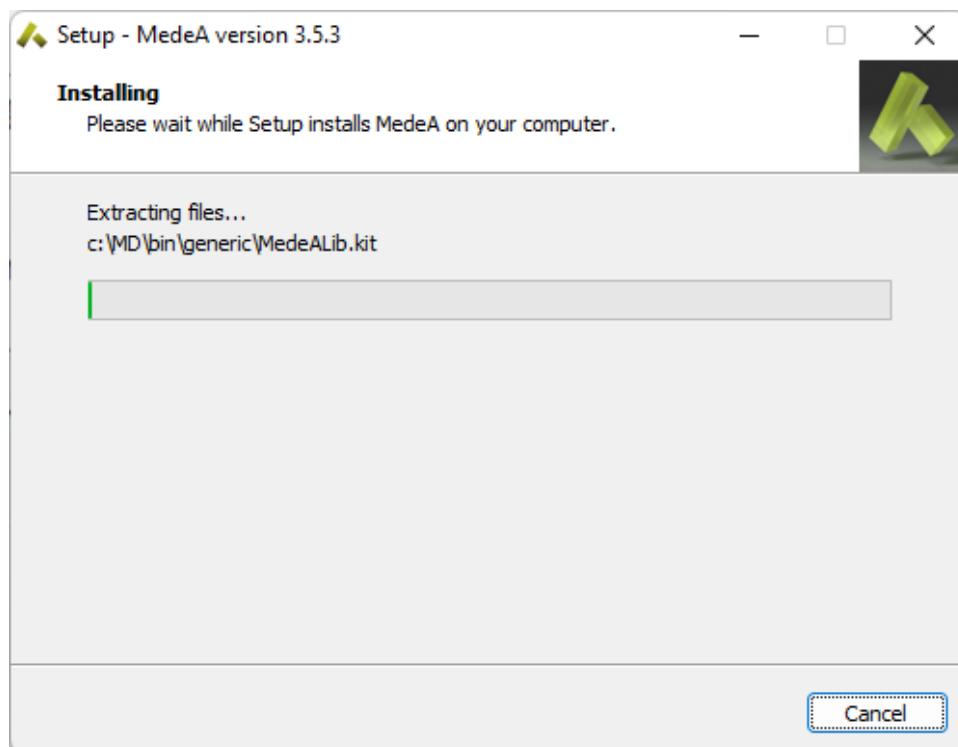
The next two steps ask whether to create the shortcuts (Start Menu) and desktop shortcuts:



The installer is created to install:

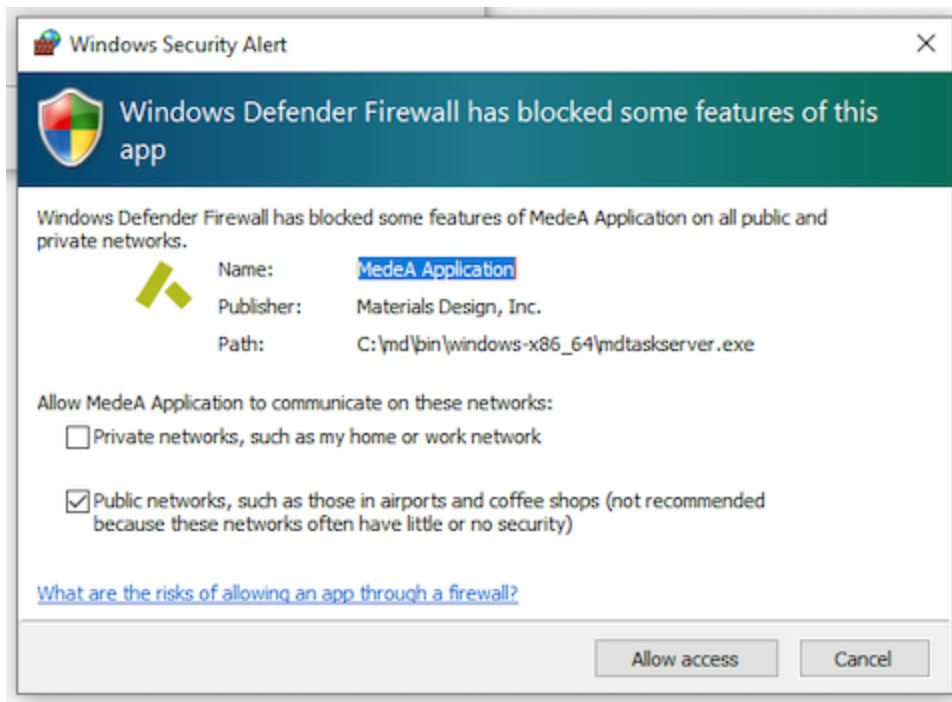


Click **Install** and the installation begins:

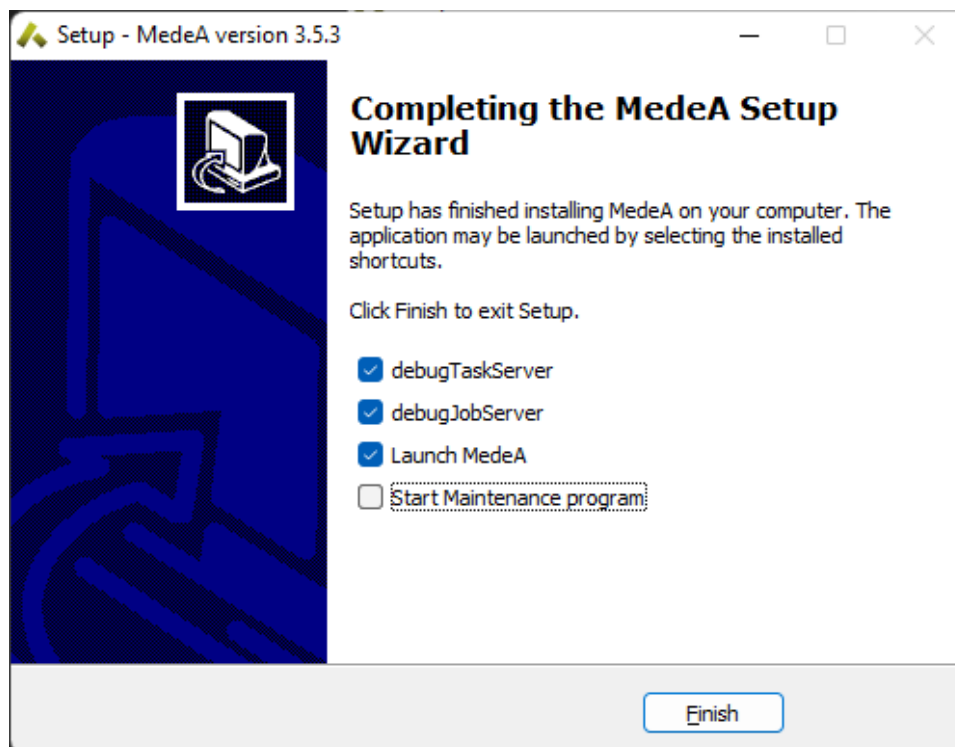


If a warning on **smpd.exe**, the *Intel Process Manager*, occurs, click **OK** to ignore as this will be installed by the JobServer / TaskServer installation.

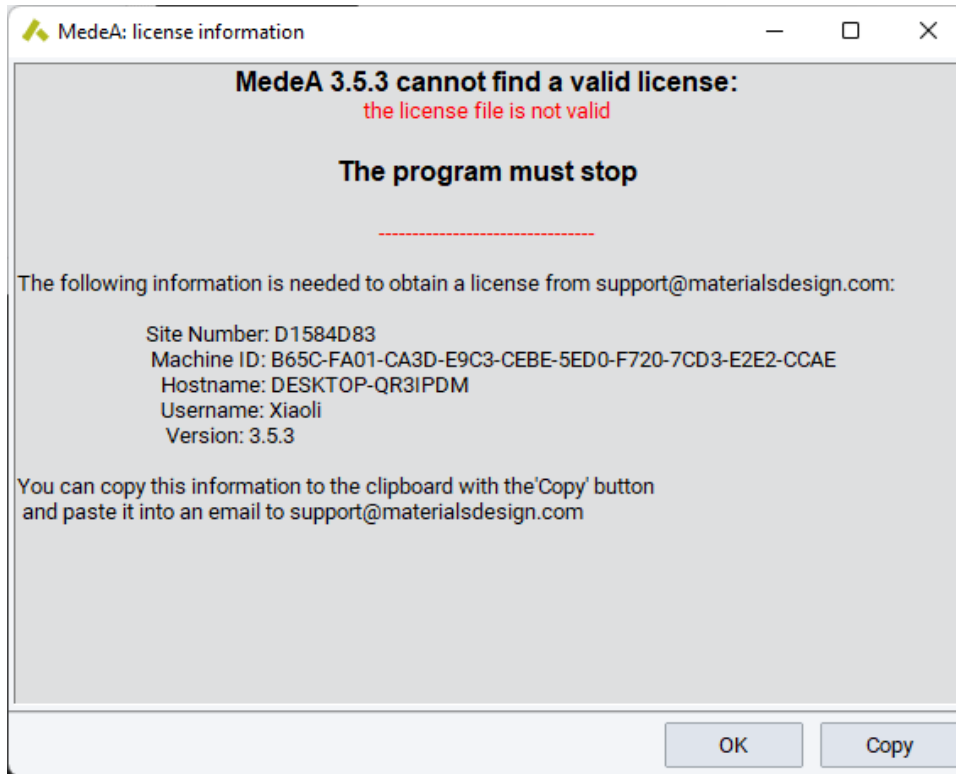
As the installer attempts to install the JobServer and the TaskServer, ports 32000 and 23000 need to be opened for internal communications. As such, click **Allow access** through the *Windows Defender Firewall*:



Installation is complete, and click **Finish** to launch *MedeA*:

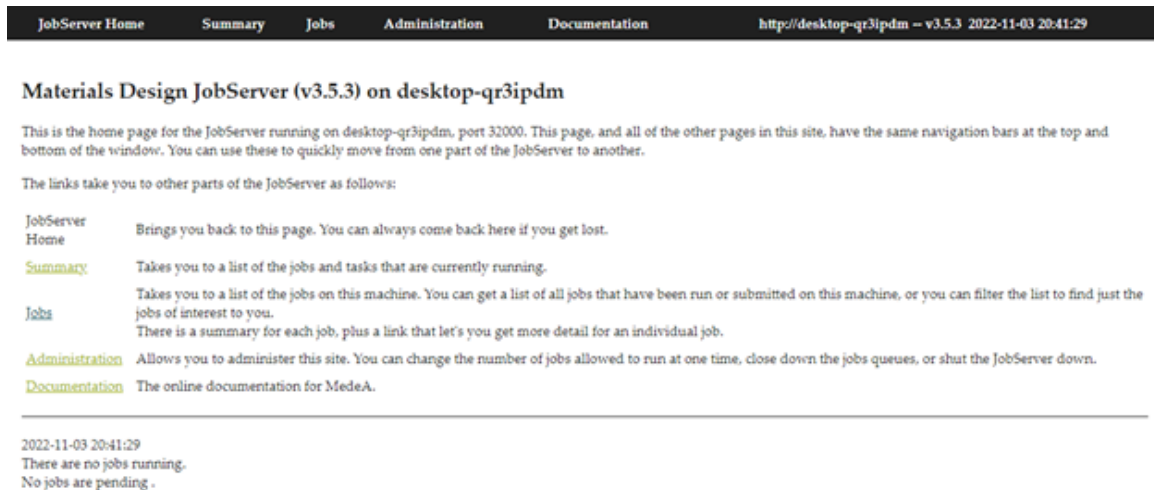


Upon opening *MedeA* for the first time after its installation, a license request window appears:



Please click the **Copy** button and send the license parameters to support@materialsdesign.com. Once a license file *license.txt* is received, place it in *C:\MD* and restart *MedeA*.

The JobServer has been installed during the process. Open a web browser and point to <http://localhost:32000> to access the JobServer:



Note: When installing without administrative rights, a local JobServer and TaskServer are launched. Keep in mind that you need to start them from the Start menu, once you log back into the machine.